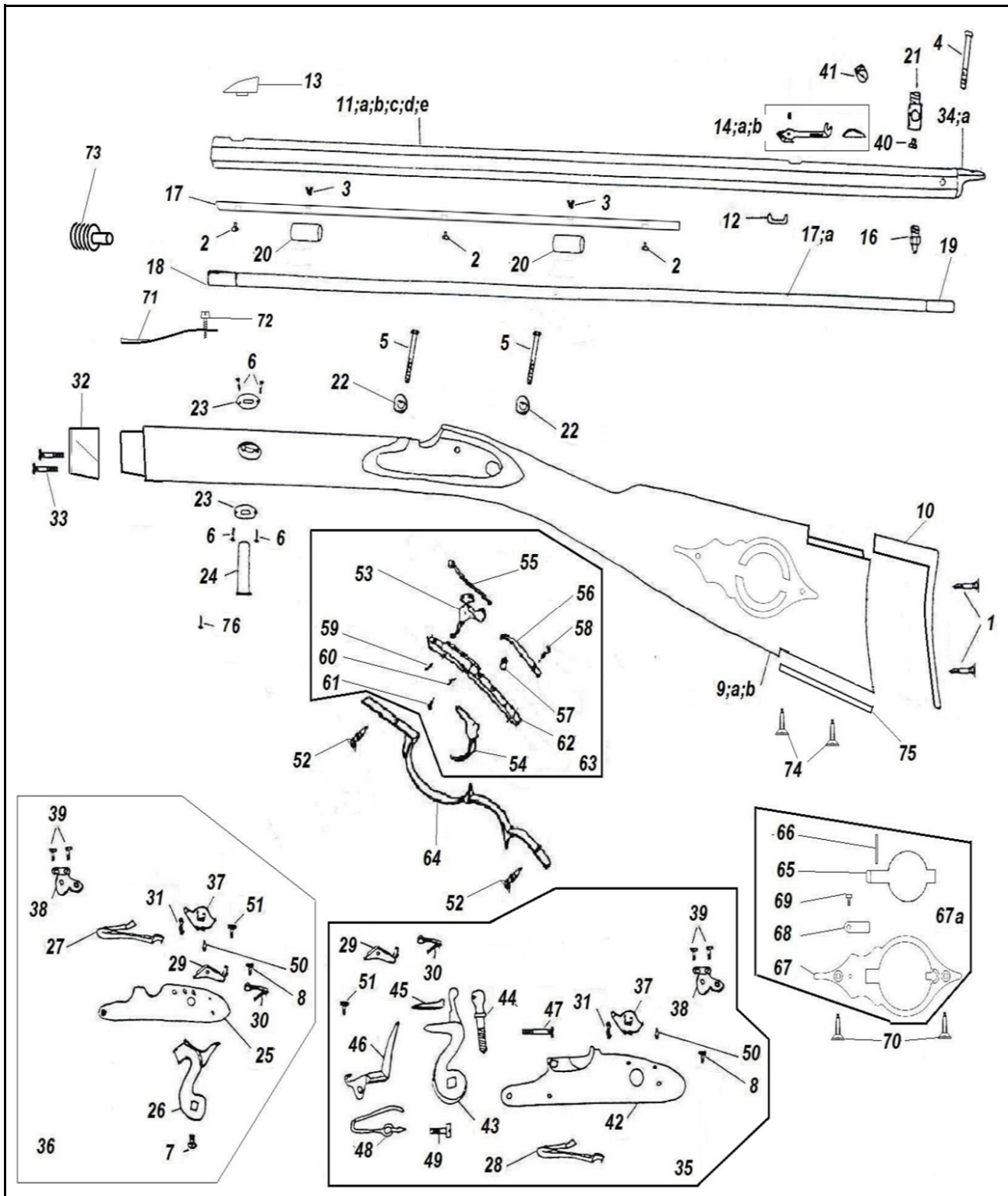


Hawken Traditional Target Left Hand



| Nomenclatura / List / Liste | | | | Codice Reference |
|-----------------------------|--|--|---------------------------------------|---------------------|
| No. | Italiano | English | Français | Référence |
| 1 | Vite calciolo | Butt plate screw | Vis de plaque de couche | M70LFM5324 |
| 2 | Vite asta portabacchetta | Barrel rib screw | Vis de tige porte-baguette | M70TFC5494 |
| 3 | Vite tubetto portabacchetta | Thimble screw | Vis de busette | M70TFC5489 |
| 4 | Vite codetta | Tang screw | Vis de queue de culasse | M70TFM6143 |
| 5 | Vite cartella | Lock plate screw | Vis de platine | M70TFM6142 |
| 6 | Vite piastrina chiavetta | Wedge plate screw | Vis de plate de clavette | M70LFC5383 |
| 7 | Vite cane | Hammer screw | Vis du chien | M70TFC5483 |
| 8 | Vite molla leva scatto | Sear spring screw | Vis du ressort de gâchette | M70TFM5214 |
| 9 | Calcio sx | Stock | Monture | 0800004021 |
| 9a | Calcio sx finito | Stock finished | Monture ouvragé | 080004021A |
| 9b | Calcio sx completo | Stock with spares | Monture complète | 080004021B |
| 10 | Calciolo | Butt plate | Plaque de couche | 0800003974 |
| 11 | Canna sx cal. .50 | Barrel .50 cal. | Canon Cal 50 | 0800007295 |
| 11a | Canna sx cal. .54 | Barrel .54 cal. | Canon Cal 54 | 0800007298 |
| 11b | Canna completa sx (a percussione) cal. .50 | Barrel with percussion spares .50 cal. | Canon complet (à percussion) cal. .50 | 0800P7295B |
| 11c | Canna completa sx (a pietra focaia) cal. .50 | Barrel with flintlock spares .50 cal. | Canon complet (à silex) cal. .50 | 0800F7295B |
| 11d | Canna completa sx (a percussione) cal. .54 | Barrel with percussion spares .54 cal. | Canon complet (à percussion) cal. .54 | 0800P7298B |
| 11e | Canna completa sx (a pietra focaia) cal. .54 | Barrel with flintlock spares .54 cal. | Canon complet (à silex) cal. .54 | 0800F7298B |
| 12 | Tenone | Wedge staple | Tenon | 0800004820 |
| 13 | Mirino | Sight | Guidon | 0800003605 |
| 14 | Tacca di mira regolabile | Adjusting rear sight | Hausse | |
| 14a | Rampa tacca di mira | Rear sight ramp | Rampe de hausse | 0800004507 |
| 14b | Grano tacca di mira | Rear sight screw | Vis de crane de mire | M70OST5328 |
| 16 | Luminello | Nipple | Cheminée | 0800003407 |
| 17 | Asta portabacchetta | Barrel rib | Tige porte-baguette | 0800001706 |
| 17a | Bacchetta completa | Ramrod with tips | Baguette complète | 0800001134 |
| 18 | Puntale anteriore bacchetta | Front ramrod tip | Refouloir | 0800004442 |
| 19 | Puntale posteriore bacchetta | Rear ramrod tip | Embout postérieur baguette | 0800004213 |
| 20 | Tubetto portabacchetta | Thimble | Busette | 0800005083 |
| 21 | Portauminello | Drum | Porte-cheminée | 0800004206 |
| 22 | Rondella vite cartella | Lock plate screw washer | Rondelle de vis platine | M70RON5848 |
| 23 | Piastrina chiavetta | Wedge plate | Plate de clavette | 0800005088 |
| 24 | Chiavetta | Wedge | Clavette | 0800007288 |
| 25 | Cartella a percussione sx | Percussion lock plate | Platine à percussion | 0800004060 |
| 26 | Cane a percussione sx | Percussion hammer | Chien à percussion | 0800004058 |
| 27 | Molla cane sx | Mainspring | Grand ressort | 0800004061 |
| 28 | Molla cane per cartella a pietra sx | Mainspring for flintlock plate | Grand ressort pour platine à silex | 0800004062 |
| 29 | Leva scatto sx | Sear | Gâchette | 0800004065 |
| 30 | Molla leva scatto sx | Sear spring | Ressort de gâchette | 0800004063 |
| 31 | Tirantino | Stirrup | Chaînette | 0800004892 |
| 32 | Puntale | Forend cap | Bande du fût ou devant | 0800005099 |
| 33 | Vite puntale | Forend cap screw | Vis de bande de fut ou devant | M70LFC5388 |
| 34 | Tappo canna cal. .50 | Breech plug .45 cal. | Bouchon de culasse Cal 45 | 0800005095 |
| 34a | Tappo canna cal. .54 | Breech plug .50 cal. | Bouchon de culasse Cal 50 | 0800005096 |
| 35 | Acciarino completo a pietra sx | Complete flintlock | Platine complète | 080000S503 |
| 36 | Acciarino completo a percussione sx | Complete percussion lock | Platine complète | 080000S502 |
| 37 | Noce sx | Tumbler | Noix | 0800004064 |
| 38 | Braghetta sx | Bridle | Bride | 0800004056 |
| 39 | Vite braghetta | Bridle screw | Vis de bride | M70TFM5508 |
| 40 | Vite portaaluminello | Drum screw | Vis porte-cheminée | M70TFC5261 |
| 41 | Focone | Vent screw | Lumière | 0800002911 |
| 42 | Cartella a pietra sx | Flintlock plate | Platine à silex | 0800004059 |
| 43 | Cane a pietra sx | Flintlock hammer | Chien à silex | 0800004057 |
| 44 | Vite premipietra | Top jaw screw | Vis des mâchoires | M70SPC5460 |
| 45 | Premipietra | Top jaw | Mâchoire supérieure | 0800004202 |
| 46 | Chiusino sx | Frizzen | Batterie | 0800004066 |
| 47 | Vite chiusino | Frizzen screw | Vis de batterie | M70SPC5449 |
| 48 | Molla chiusino sx | Frizzen spring | Ressort de batterie | 0800004067 |
| 49 | Vite molla chiusino | Frizzen spring screw | Vis du ressort de batterie | M70TFC5214 |
| 50 | Farfallina | Fly | Papillon | 0800001892 |
| 51 | Vite leva scatto | Sear screw | Vis de gâchette | M70TFM5510 |
| 52 | Viti guardamano | trigger guard screw | Vis pontet | M70LFC5393 |
| 53 | Grilletto anteriore | Front trigger | Détente antérieure | 0800003008 |
| 54 | Grilletto posteriore | Rear trigger | Détente postérieure | 0800003009 |

| Nomenclatura / List / Liste | | | | Codice Reference |
|------------------------------------|---|------------------------------------|---------------------------------------|-------------------------|
| No. | Italiano | English | Français | Référence |
| 55 | Molla grilletto anteriore | Front trigger spring | Ressort de détente antérieure | 0800003614 |
| 56 | Molla grilletto posteriore | Rear trigger spring | Ressort de détente postérieure | 0800003754 |
| 57 | Vite regolazione molla caricam. stecher | Set trigger adjusting spring screw | Vis réglage ressort de double détente | M700ST5308 |
| 58 | Vite molle grilletti | Triggers springs screw | Vis ressorts des détentés | M70TFC5501 |
| 59 | Copiglia grilletto anteriore | Front trigger pin | Goupille de détente antérieure | M70COP5521 |
| 60 | Copiglia grilletto caricamento | Rear trigger pin | Goupille de détente postérieure | M70COP5520 |
| 61 | Vite regolazione stecher | Set trigger adjusting screw | Vis réglage double détente | M70TFC5214 |
| 62 | Sottoguardia | Trigger plate | Sous-garde | 0800004590 |
| 63 | Sottoguardia completo | Asembled trigger plate | Sous-garde complète | 0800004590 |
| 64 | Guardamano | Trigger guard | Pontet | 0800004048 |
| 65 | Sportello tabacchiera | Patch-box lid | Couvercle de patch-box | 0800005085 |
| 66 | Spina tabacchiera | Patch-box pin | Goupille du patch-box | M70COP5920 |
| 67 | Tabacchiera | Patch-box | Patch-box | 0800005084 |
| 67a | Tabacchiera completa | Patch-box with spares | Patch-box complète | 080G005084 |
| 68 | Molla tabacchiera | Patch-box spring | Ressort du patch-box | 0800005086 |
| 69 | Vite molla tabacchiera | Patch-box spring screw | Vis du ressort du patch-box | M70TFC5205 |
| 70 | Vite tabacchiera | Patch-box screw | Vis du patch-box | M70LFC5392 |
| 71 | Molla fermo bacchetta | Ramrod spring | Ressort de baghette | 0800004016 |
| 72 | Vite molla fermo bacchetta | Ramrod spring screw | Vis du ressort de baghette | M70LFC6135 |
| 73 | Portastraccio | Jag | Porte-chiffon | 036U535500 |
| 73a | Portastraccio cal. .54 | Jag cal. .54 | Porte-chiffon cal. .54 | 036U535540 |
| 74 | Vite piastrina calciolo | Butt plate screw | Vis de plaque de couche | M70LFC5392 |
| 75 | Piastrina calciolo | Butt plate | Plate de plaque de couche | 0800004205 |
| 76 | Vite fermo chiavetta | Screw | Vis | M70LFC5383 |